



# FACT SHEET CAGRD

## WHAT IS THE CENTRAL ARIZONA GROUNDWATER REPLENISHMENT DISTRICT?

CAGRD is a special function of Central Arizona Project, replenishing water to foster and enhance responsible groundwater management. It was created by the Arizona State Legislature in 1993 to facilitate the State's adoption of the assured water supply rules requiring new growth to demonstrate a 100-year assured water supply. CAGRD's members are Arizonans in Maricopa, Pima and Pinal counties without adequate access to renewable water supplies. CAGRD serves its members by replenishing the groundwater they pump, providing a way to comply with Arizona's groundwater laws.



Since its inception, CAGRD has replenished almost 650,000 acre-feet of water on behalf of its members. One acre-foot equals 325,851 gallons.



23 Arizona cities, towns and private water companies and more than 1,300 subdivisions in Maricopa, Pima and Pinal counties are members of CAGRD.



CAGRD provides an effective mechanism for enrollees to comply with Arizona's groundwater management laws.

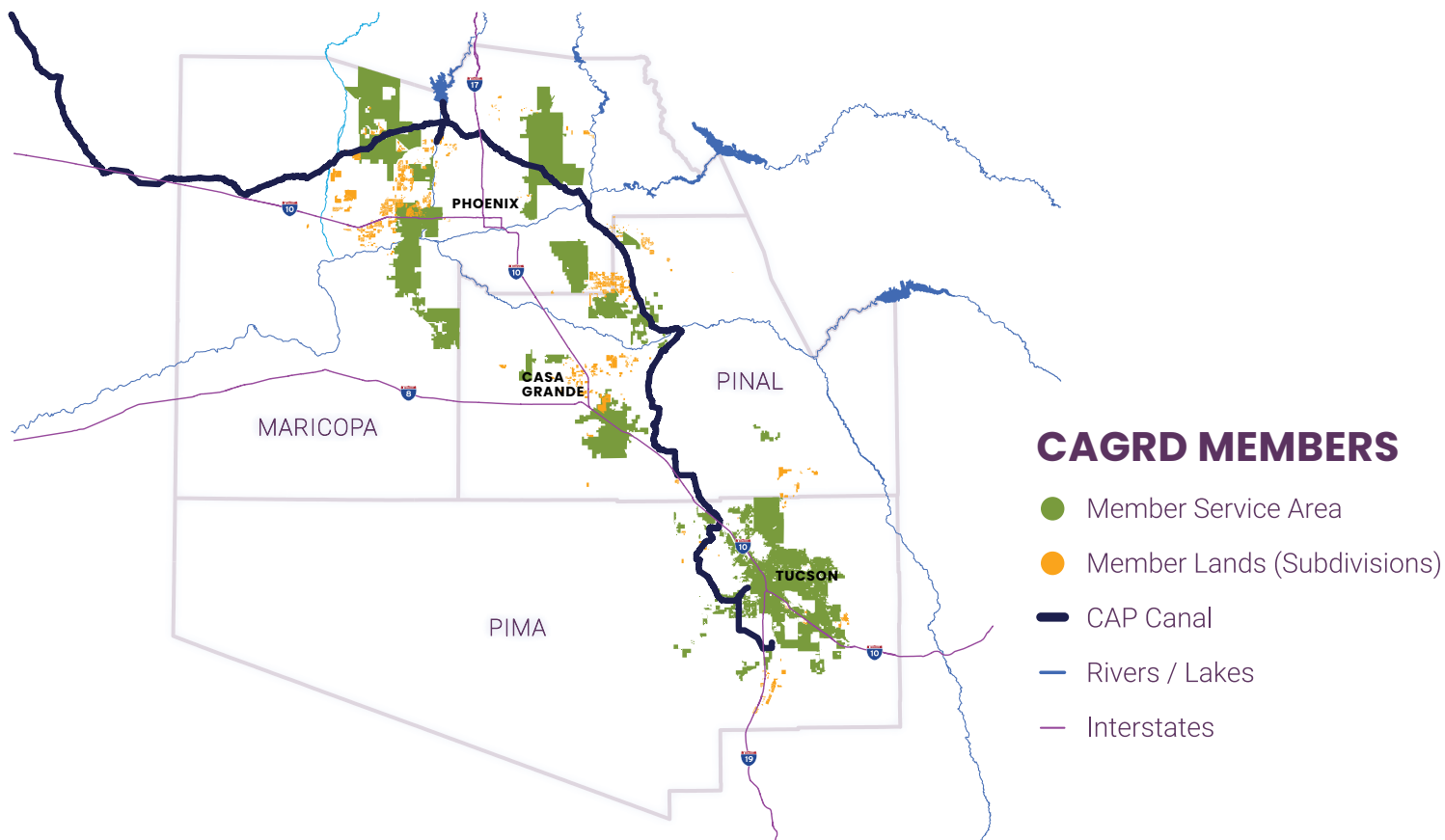


Economic development is possible through CAGRD's responsible water management.

**YOUR WATER. YOUR FUTURE.**  
cagrd.com







## WHO ARE THE MEMBERS OF CAGRD?

Any city, town, water company, subdivision or homeowner's association located in the Phoenix, Pinal or Tucson Active Management Area with access to a 100-year physical supply of groundwater may voluntarily join CAGRD so long as it meets the State's requirements.

## THERE ARE TWO TYPES OF CAGRD MEMBERS:

**1** Member Service Areas (MSA) -- the service area of a city, town or private water company

Water providers who become MSAs pay a replenishment assessment directly to CAGRD according to the amount of excess groundwater they deliver within their service areas during a year.

*There are 23 CAGRD Member Service Areas – nine in the Phoenix AMA, four in the Pinal AMA and 10 in the Tucson AMA. CAGRD MSAs stretch from Sahuarita Water Company to Surprise.*

**2** Member Lands (ML) -- an individual subdivision or development

For MLs, an annual replenishment assessment is collected by the County treasurer from each individual parcel of land based on the amount of excess groundwater delivered to that parcel by its water provider.

*There are nearly 1,300 CAGRD Member Land subdivisions as of January 2024. These Member Lands represent more than 300,000 homes when fully developed and are served by approximately 60 different water providers.*

**YOUR WATER. YOUR FUTURE.**

[cagrd.com](http://cagrd.com)

Updated Jan. 2024

