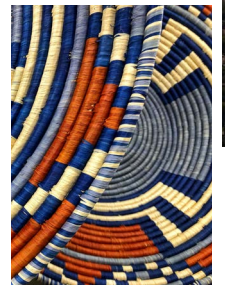
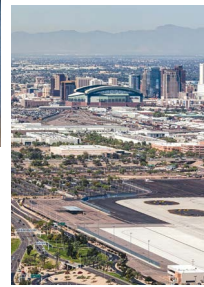


# KNOW YOUR WATER

## FACT SHEET

**YOUR WATER.  
YOUR FUTURE.**

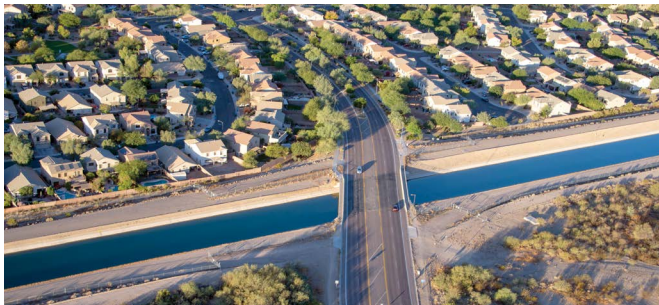


### The CAP system is **AN ENGINEERING MARVEL**

Construction of the \$4 billion CAP system began in 1973 and was completed 20 years later. The result is an engineering marvel that pumps nearly 500 billion gallons of water uphill.

### CAP water is important to **COMMUNITIES and INDUSTRIES**

CAP typically has more than 60 water users that fall into three user groups: municipal and industrial, agricultural and Native American Tribes.



### CAP water is **KEY TO OUR ECONOMY**

Few natural resources are as precious as water and with CAP providing reliable, renewable Colorado River water, the Arizona economy is stronger and residents can enjoy a higher quality of life.

### We are focused on **PROTECTING and PRESERVING** Arizona's water supply

CAP collaborates with federal and state agencies and stakeholders to provide a reliable water supply for current and future generations of Arizonans.

## What is Central Arizona Project?

**CENTRAL ARIZONA PROJECT (CAP)** is a 336-mile system that brings Colorado River water to central and southern Arizona. CAP supplies water to 80% of the state's population, including irrigated farmland, and is the single largest provider of water to Native American Tribes in the Colorado River system.



[www.CentralArizonaProject.com](http://www.CentralArizonaProject.com)